

# A LONG WAY TOGETHER



# TIPPER TIRES



## XL GRIP

Model/Size	10.00-20 <b>18PR</b>   11.00-20 <b>18PR</b>
Machinery	On/Off Trucks
Applications	Transport
<p>XL GRIP (E-3) best suits on/off trucks carrying heavy loads in mining applications. Its tread compound is designed to minimize cuts and punctures on harshest ground conditions. XL GRIP (E-3) offers exceptional traction and provides an extended tire life-cycle.</p>	
Performance	<span>Cut Resistance</span> <span>Durability</span> <span>Heavy Duty</span> <span>Traction</span>



## XL GRIP ULTRA

Model/Size	10.00-20 <b>18PR</b>   11.00-20 <b>18PR</b>   12.00-20 <b>20PR</b>   12.00-24 <b>20PR</b>
Machinery	On/Off Trucks
Applications	Transport   Mining
<p>XL GRIP ULTRA is a bias-ply tire, particularly suitable for on/off trucks in heavy-duty service conditions such as mining applications, quarries and construction sites. The non-directional tread design provides excellent front and lateral traction. The tire features a strong nylon casing with optimized tie bars and a special tread compound to ensure high cut and puncture resistance as well as excellent durability and wear resistance in addition to best self-cleaning properties even on rocky surfaces.</p>	
Performance	<span>Cut Resistance</span> <span>Durability</span> <span>Heavy Duty</span> <span>Traction</span> <span>Self-Cleaning</span>



# STREER GRIP



<b>Model/Size</b>	10.00-20 <b>18PR</b>   11.00-20 <b>18PR</b>   12.00-24 <b>20PR</b>
<b>Machinery</b>	On/Off Trucks
<b>Applications</b>	Transport
<p>XL GRIP (E-3) best suits on/off trucks carrying heavy loads in mining applications. Its tread compound is designed to minimize cuts and punctures on harshest ground conditions. XL GRIP (E-3) offers exceptional traction and provides an extended tire life-cycle.</p>	
<b>Performance</b>	<span>Cut Resistance</span> <span>Durability</span> <span>Heavy Duty</span> <span>Traction</span>

# ROCK GRIP



<b>Model/Size</b>	10.00-20 <b>18PR</b>   11.00-20 <b>18PR</b>   12.00-20 <b>20PR</b>   12.00-24 <b>20PR</b>
<b>Machinery</b>	On/Off Trucks
<b>Applications</b>	Transport   Mining
<p>XL GRIP ULTRA is a bias-ply tire, particularly suitable for on/off trucks in heavy-duty service conditions such as mining applications, quarries and construction sites. The non-directional tread design provides excellent front and lateral traction. The tire features a strong nylon casing with optimized tie bars and a special tread compound to ensure high cut and puncture resistance as well as excellent durability and wear resistance in addition to best self-cleaning properties even on rocky surfaces.</p>	
<b>Performance</b>	<span>Cut Resistance</span> <span>Durability</span> <span>Heavy Duty</span> <span>Traction</span> <span>Self-Cleaning</span>



# BACKHOE LOADER TIRES



## LOADER PLUS

<b>Model/Size</b>	14.00-20 <b>20PR</b>
<b>Machinery</b>	Dozer   Loader
<b>Applications</b>	Loading   Dozing
<p>LOADER PLUS (L-3) is a bias-ply tire specially designed for loaders. The tread compound provides cut-and-chip-resistant properties and suites best for loading and dozing operations.</p>	
<b>Performance</b>	<a href="#">Cut Resistance</a> <a href="#">Traction</a>



## AT 621

<b>Model/Size</b>	12.5/80-18 <b>16PR</b>   16.09-28 <b>12PR</b>
<b>Machinery</b>	Compact Loader   Backhoe Loader   Loader
<b>Applications</b>	Digging   Loading
<p>AT 621 is suitable for backhoe loaders and compact loaders in all digging and loading operations in agriculture. The AT 621 tire features an extra deep tread which ensures great cut and chip resistance and higher durability. In addition, this BKT tire ensures great durability and self cleaning properties. AT 621 is available in several versions to meet the most differing user requirements.</p>	
<b>Performance</b>	<a href="#">Cut &amp; Chip Resistance</a> <a href="#">Durability</a> <a href="#">Traction</a> <a href="#">Self-Cleaning</a>





## AT 625

<b>Model/Size</b>	14.09-24 <b>12PR</b>   16.09-28 <b>12PR</b>
<b>Machinery</b>	Compact Loader   Backhoe Loader   Loader
<b>Applications</b>	Digging   Loading
<p>AT 625 is suitable for backhoe loaders and compact loaders in all farming digging and loading operations. Its extra deep tread ensures increased puncture resistance and durability. AT 625 features excellent traction and stability as well as improved cut and chip resistance.</p>	
<b>Performance</b>	<span>Cut &amp; Chip Resistance</span> <span>High Puncture Resistance</span> <span>Stability</span> <span>Traction</span>



## XL GRIP

<b>Model/Size</b>	9.00-16 <b>16PR</b>   16.09-28 <b>12PR</b>
<b>Machinery</b>	On/Off Trucks
<b>Applications</b>	Transport
<p>XL GRIP (E-3) best suits on/off trucks carrying heavy loads in mining applications. Its tread compound is designed to minimize cuts and punctures on harshest ground conditions. XL GRIP (E-3) offers exceptional traction and provides an extended tire life-cycle.</p>	
<b>Performance</b>	<span>Cut Resistance</span> <span>Durability</span> <span>Heavy Duty</span> <span>Traction</span>



## ROCK GRIP

<b>Model/Size</b>	9.00-16 <b>16PR</b>
<b>Machinery</b>	Backhoe Loader   Trailer
<b>Applications</b>	Digging   Loading   On-Off Road   Transport
<p>BK 6060 is a both field- and road-oriented tire for trailers and backhoe loaders in transport as well as digging and loading applications. This block pattern tire provides an extended tire life-cycle.</p>	
<b>Performance</b>	<span>On/Off Road</span> <span>Durability</span>

# GRADER TIRES



## SUPER GRADER

Model/Size	13.00-24 <b>12PR</b>   14.00-24 <b>16PR</b>
Machinery	Grader
Applications	Scraping
<p>SUPER GRADER (G-2) is a bias tire particularly designed for graders. It shows excellent traction and self-cleaning features. SUPER GRADER is made of a special compound which enables an extended tire life-cycle and heavy-duty service.</p>	
Performance	<span>Durability</span> <span>Heavy Duty</span> <span>Self-Cleaning</span> <span>Traction</span>

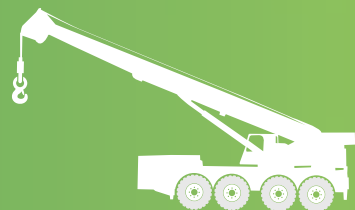


## XL GRIP

Model/Size	14.00-24 <b>16PR</b>
Machinery	On/Off Trucks
Applications	Transport
<p>XL GRIP (E-3) best suits on/off trucks carrying heavy loads in mining applications. Its tread compound is designed to minimize cuts and punctures on harshest ground conditions. XL GRIP (E-3) offers exceptional traction and provides an extended tire life-cycle.</p>	
Performance	<span>Cut Resistance</span> <span>Durability</span> <span>Heavy Duty</span> <span>Traction</span>



# HS CRANE RADIAL TIRES



## AIRO MAX AM27

Model/Size	385/95R24   445/95R25
Machinery	Mobile Crane
Applications	Construction
<p>AIROMAX AM 27 is the ideal road-oriented tire for construction applications with cranes. It features extraordinary heat resistance and outstanding riding comfort. AIROMAX AM 27 is a high-speed tire particularly suitable for all operations requiring a high level of handling.</p>	
Performance	<span>Handling &amp; Comfort</span> <span>Heat Resistance</span> <span>Road Oriented</span>



# FORK LIFT TIRES



## MAGLIFT STD

Model/Size	6.50-10 5.00   7.00-12 5.00
Machinery	Forklift
Applications	Industrial Handling   Logistics Operations

MAGLIFT has been particularly designed for forklift in industrial and logistic operations. This solid tire features high load capacity and outstanding comfort. MAGLIFT shows excellent cut and chip resistance resulting in a long tire life. Its reinforced structure eliminates slippage risks whilst the special bead shape simplifies mounting operations on the rim.

### Performance

Durability | Cut & Chip Resistance | High Load Capacity | Comfort



## MAGLIFT ECO

Model/Size	6.50-10 5.00   7.00-12 5.00
Machinery	Forklift
Applications	Logistics Operations

MAGLIFT ECO has been particularly designed for forklifts. The tire features a wide lug pattern providing maximum stability and optimized load distribution. Its reinforced structure eliminates slippage risks whilst the specifically designed rim guard ensures protection against wheel damage. MAGLIFT ECO shows excellent traction as well as low rolling resistance and low heat built up for improved efficiency.

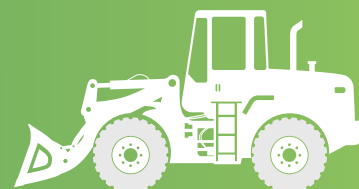
### Performance

Durability | Cut & Chip Resistance | High Load Capacity | Comfort





# WHEEL LOADER TIRES



## XL GRIP PLUS

Model/Size	17.5-25 20PR
Machinery	Dozer   Loader
Applications	Loading   Dozing
<p>XL GRIP PLUS (L-4) has been specially designed for loaders. Its deep tread provides high cut and puncture resistance as well as an extended tire life-cycle. XL GRIP PLUS is particularly suitable for heavy-duty service.</p>	
Performance	<span>Durability</span> <span>Cut &amp; Chip Resistance</span> <span>High Load Capacity</span> <span>Comfort</span>



## LOADER PLUS

Model/Size	17.5-25 20PR
Machinery	Dozer   Loader
Applications	Loading   Dozing
<p>LOADER PLUS (L-3) is a bias-ply tire specially designed for loaders. The tread compound provides cut-and-chip-resistant properties and suites best for loading and dozing operations.</p>	
Performance	<span>Cut Resistance</span> <span>Traction</span>



# SOIL COMPACTOR TIRES



## TR 387

Model/Size	23.1-26 12PR
Machinery	Trailer   Compactor
Applications	Transport   Agro-Industrial
<p>TR 387 is an agro-industrial tire suitable for sugar cane trailers and compactors. It features high load capacity and is available in different versions to meet specific user requirements in terms of cut and chip resistance, heavy-duty services and durability. The "dual bead" version is particularly suitable for industrial tractors and transport operations using trailers.</p>	
Performance	<span>Durability</span> <span>High Load Capacity</span>



## TR 390

Model/Size	23.1-26 12PR
Machinery	Trailer   Compactor
Applications	Transport   Agro-Industrial   Compacting
<p>TR 390 is an agro-industrial tire suitable for sugar cane trailers and compactors. TR 390 features high load capacity and increased durability. Its "dual bead HD" version is particularly suitable for industrial tractors and transport operations using trailers, whereas its "dual bead HD special" version is ideal for heavy-duty service.</p>	
Performance	<span>Durability</span> <span>High Load Capacity</span>



# PICK N CARRY CRANE TIRES



## RM 2002

Model/Size	13.00-24 <b>12PR</b>   14.00-24 <b>16PR</b>
Machinery	Trailer   Mobile Crane
Applications	Field and Road Transport
<p>RM 2002 is suitable for transport operations with trailers and light trucks, both on and off the road. It ensures long durability and top performance along the entire product life-cycle. Its "industrial" version is ideal for pick &amp; carry cranes.</p>	
Performance	<span>Durability</span>



## SUPER GRADER

Model/Size	13.00-24 <b>12PR</b>   14.00-24 <b>16PR</b>
Machinery	Grader
Applications	Scraping
<p>SUPER GRADER (G-2) is a bias tire particularly designed for graders. It shows excellent traction and self-cleaning features. SUPER GRADER is made of a special compound which enables an extended tire life-cycle and heavy-duty service.</p>	
Performance	<span>Durability</span> <span>Heavy Duty</span> <span>Self-Cleaning</span> <span>Traction</span>



## LOADER PLUS

Model/Size	14.00-20 <b>20PR</b>
Machinery	Dozer   Loader
Applications	Loading   Dozing
<p>LOADER PLUS (L-3) is a bias-ply tire specially designed for loaders. The tread compound provides cut-and-chip-resistant properties and suites best for loading and dozing operations.</p>	
Performance	<span>Cut Resistance</span> <span>Traction</span>

# SKID STEER TIRES



## POWER TRAX HD

Model/Size	10-16.5 <b>10PR</b>
Machinery	Container Handler   Underground Mining Vehicle
Applications	Intermodal Transport   Underground Mining
Performance	<b>Durability</b>

POWER TRAX HD premium tire is specially designed for equipment in port and underground mining applications. Its deep tread, the extra thick sidewall and the tough casing provide exceptional durability minimizing the risk of punctures and accidental damages. The tire features excellent cut and chip resistance, which is particularly suitable for rough and hard surfaces. The specially designed rim guard ensures protection against flats and wheel damage in the rim flange area.

A LONG WAY  
**TOGETHER**

"Maximize Efficiency, Minimize Downtime  
Choose Our Reliable OTR Mining Tires."



AUTHORISED DISTRIBUTORS OF BKT OTR TIRES  
**BEEKAY PARTS BAZAAR PVT LTD**